



38 Jamieson Terrace
York, YO23 1HF
£1,300 Per Month

 3  1  2  D

Available 29th May 2026 onwards

This well presented three bedroom terraced house is located in the very sought after location of South Bank and within close proximity of York Racecourse, Rowntree Park and the city centre.

The property comprises an entrance hallway which opens up to the large open-plan lounge and dining area which overlooks the secluded garden and courtyard to the rear. This then leads onto the kitchen with white goods including fridge/freezer, washer-dryer and oven and hob.

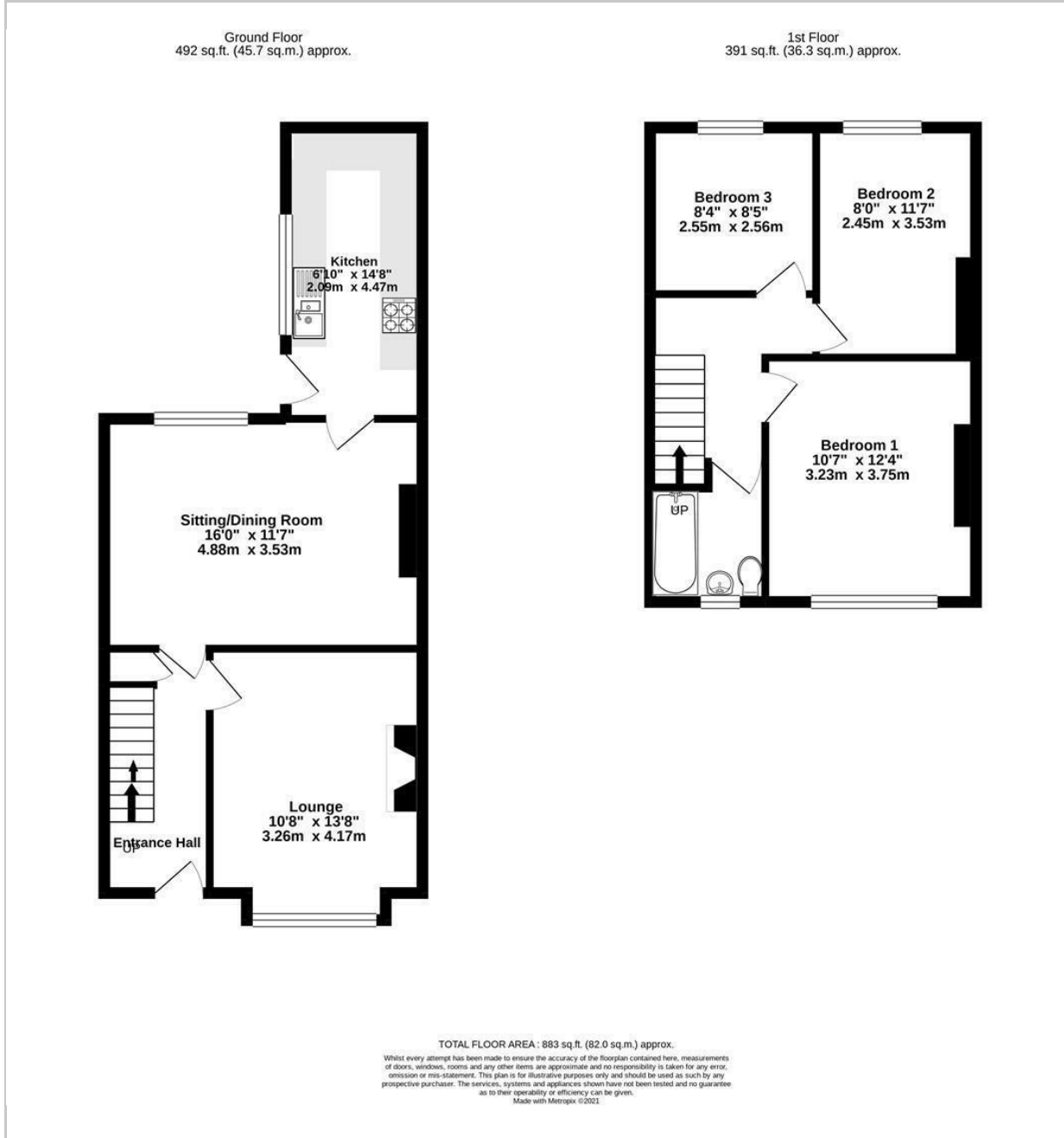
Back in the hallway as you proceed up the stairs are three well proportioned bedrooms and the bathroom with bath and shower.

Council Tax B
EPC D

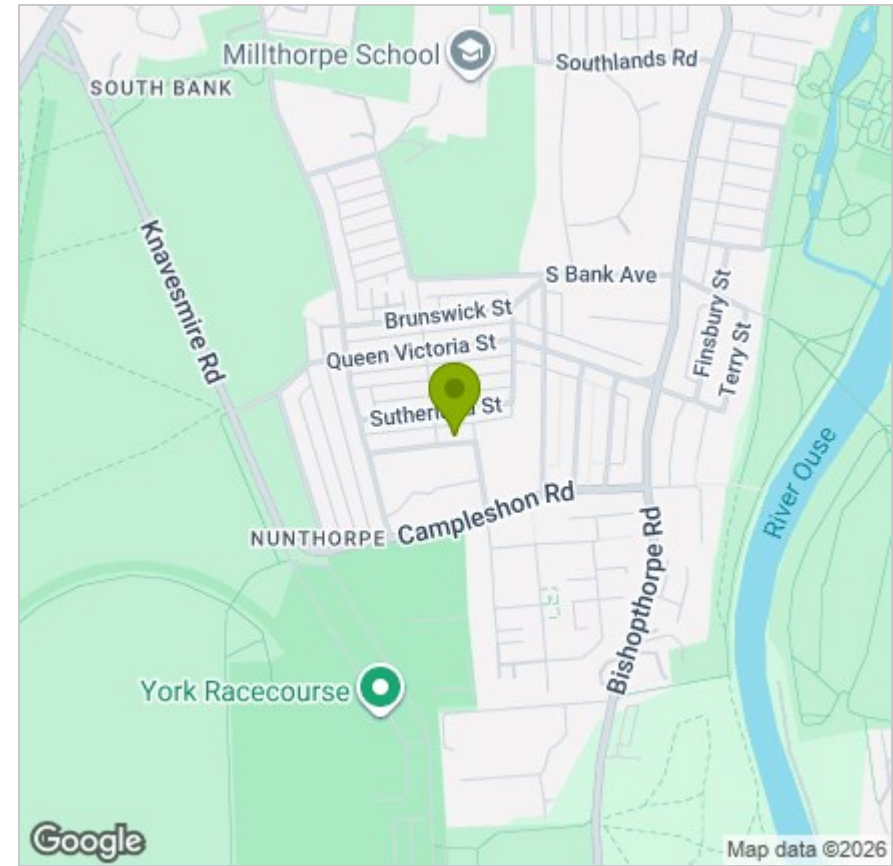




FLOOR PLAN



LOCATION



EPC

Energy Efficiency Rating		Current	Potential
Very energy efficient - lower running costs			
(92 plus) A			
(81-91) B			84
(69-80) C			
(55-68) D		64	
(39-54) E			
(21-38) F			
(1-20) G			
Not energy efficient - higher running costs			
England & Wales		EU Directive 2002/91/EC	

These particulars, whilst believed to be accurate are set out as a general outline only for guidance and do not constitute any part of an offer or contract. Intending purchasers should not rely on them as statements of representation of fact, but must satisfy themselves by inspection or otherwise as to their accuracy. No person in this firm's employment has the authority to make or give any representation or warranty in respect of the property.